

Multi-Dwelling Streamer Headend System



ZMD-9112

Prospect

Allows large number of clients to receive the HD IP base programs by using multicast function

Introduction

The rack-mounted Multi-Dwelling Streamer System has built in 12 HDMI Encoder and Transcoder. It can simultaneously encode up to 12 contents. By using this solution, the installation and distribution costs can be significantly reduced. For SMATV system, the rack-mounted Multi-Dwelling Streamer System will be a cutting-edge device for hotels and flats. Besides multicast, it also supports Unicast function which is a great feature for advertisement with Multi-Dwelling Digital Media Server.

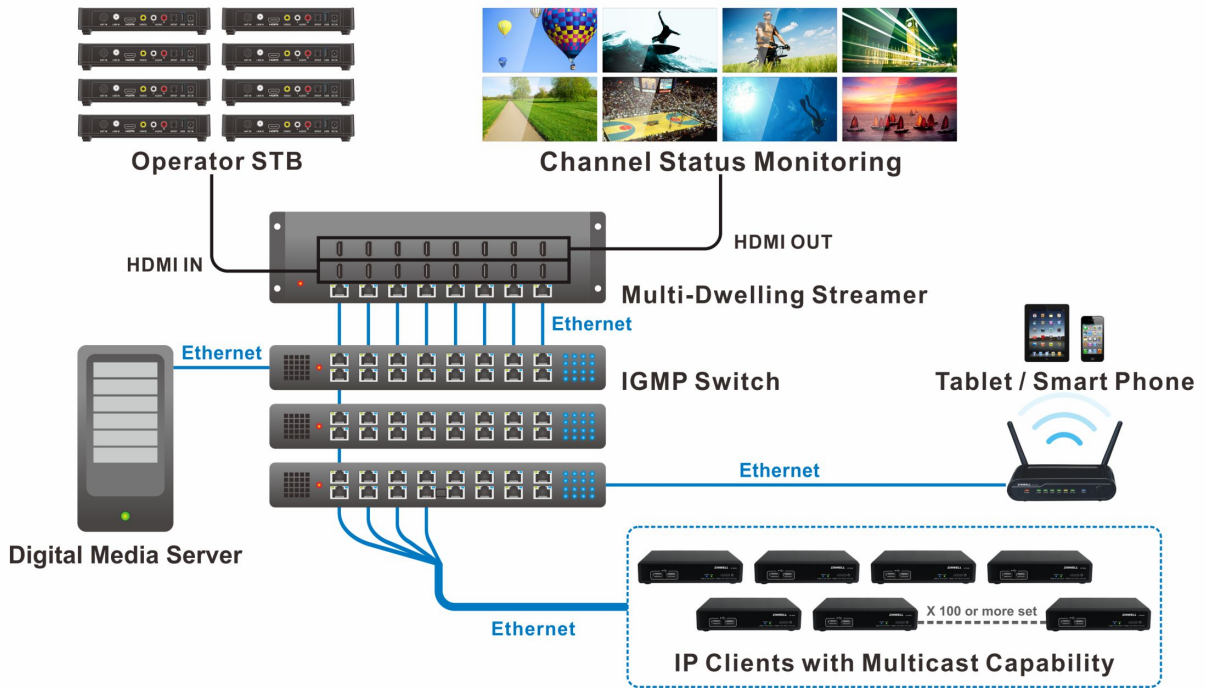
Hardware

Platform	12 X 3000 DMIPS Dual-thread, Dual-issue processor
Interface	12 X HDMI input, 12 X HDMI output, 12 X Ethernet port
Casing	19 inch 4 X Unit (48.3 X 33.5 X 18 cm)
Power System	Redundant Power Supply X 2
Cooling System	Cooling Fan X 2

Software

Features	Encode Video / Audio from HDMI-In and Stream Out by Ethernet
	Pass-through HDMI-In to HDMI-out Simultaneously when Streaming
	Multicast by RTP
	Unicast by HLS & HPD
Web UI	Easy to manage the server remotely by Web UI
	Access Web UI easily via browsers in PC
	Software upgrade by Web UI

Multi-Dwelling Streamer Connection Illustration



Multi-Dwelling Streamer Headend Scenario

